

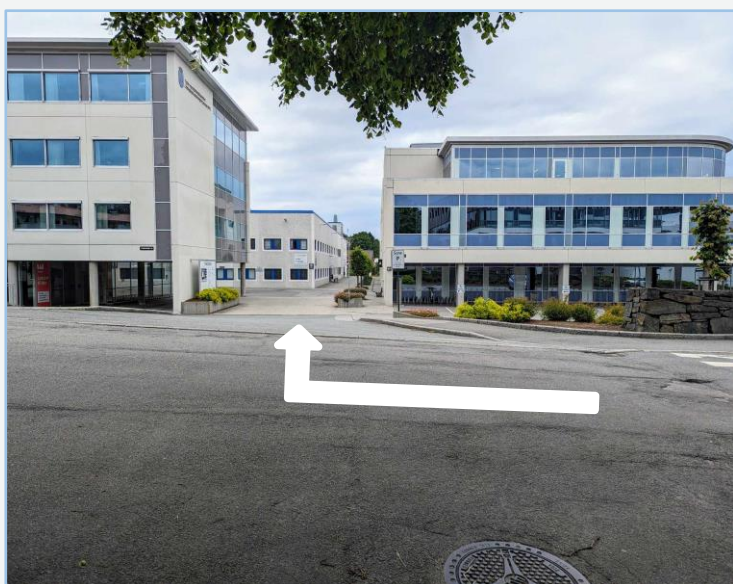
Visual guide for Røntgen Hillevåg



1. When you drive up Torgveien, you will see Kilden shopping center on the left side. The black arrow in the picture shows where to enter to park in the parking garage. The white arrow in the picture indicates where to enter if you need to drop off a patient at the entrance door to the Radiology department at Hillevåg, or if you want to park behind the Øyepoliklinikk.



2. In the intersection leading to the parking garage, you will find a map providing an overview of the buildings and parking options. There is a parking garage in the Day Surgery Unit-building, which is located right next to Røntgen Hillevåg, and behind the Øyepoliklinikk. All parking spaces require payment.



3. Here you drive in if you are accompanying a patient to X-ray, or if you wish to park behind the Øyepoliklinikk.



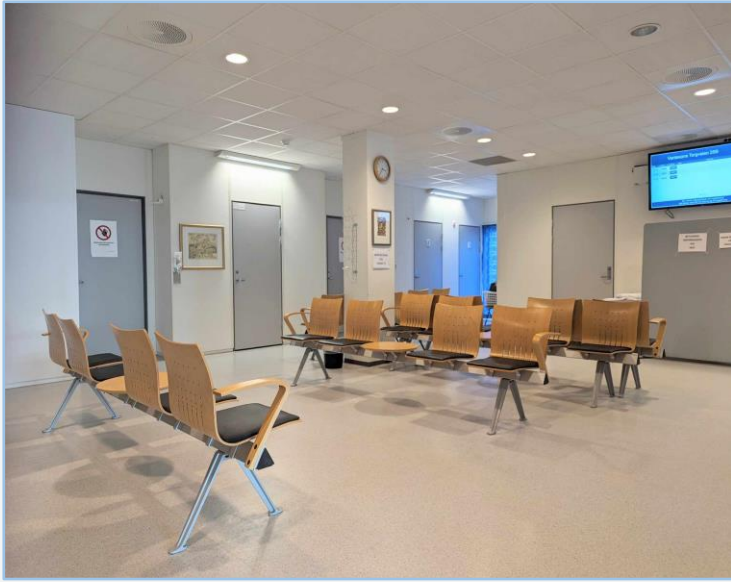
4. This is the parking garage in the Day Surgery Unit-building, the entrance to Røntgen Hillevåg is located behind this building.



5. Here you will find the parking spaces at the back of Øyepoliklinikken.



6. Here is the entrance to the Radiology department at Hillevåg, Torgveien 25B. You will first encounter a blue door that opens automatically. Next, you will come to a hallway where accessible restrooms are available on the right side. Continue straight through a glass door to enter the waiting area.



7. This is the waiting area for Røntgen Hillevåg. Here, you check in via SMS that you receive on your mobile phone. If you have not received an SMS or encounter any other challenges with the registration, please inform the health secretary at the reception. The reception will be on your right side when you enter the waiting area. There is also a dispenser with cold water for drinking, as well as access to hand sanitizer. You will be called by a radiographer or health secretary when it is your turn.



8. The radiographer will accompany you to the MRI lab. You can change clothes in the changing room if necessary. The changing room is equipped with a chair, mirror, and shoehorn. You can lock your valuables in a lockable cabinet nearby.



9. This is our MRI machine. When the photos are taken you will lie down on the bench that moves into the tunnel. The tunnel is always open in both ends.

The MRI machine will emit loud banging sounds during the procedure. You will be offered hearing protection and earplugs to reduce the sound. You will also be offered the option of listening to music or radio if, you prefer this. The periods with sound lasts from 1 to 5 minutes at a time.

The procedure lasts from 15 to 60 minutes, depending on the examination. In order to get good images, it is important that you stay still while the images are captured.

Some examinations require a contrast medium. The radiographer will then insert an IV cannula (a thin plastic tube) into your arm or hand before the procedure. You will be given an alarm that you can use to contact the radiographer if you need to during the procedure. The radiographer is also in touch with you via camera and microphone.



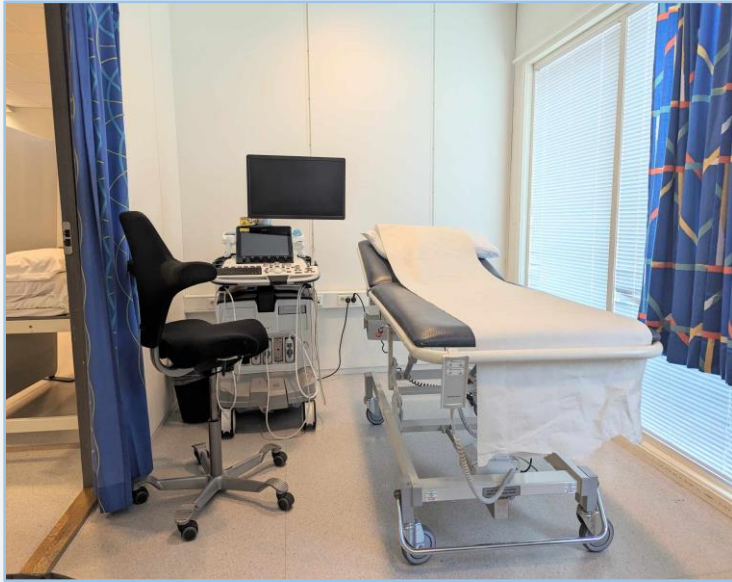
10. This is one of our X-ray labs. All the X-ray labs have lockable changing rooms with a chair, mirror, and shoehorn.

In order to obtain the best possible X-ray images, you may need to remove jewelry, watches, and some clothing that are in the area being imaged. In this lab, images can be taken while you are lying down, sitting, or standing. The X-ray machine is adjusted to different positions depending on what needs to be imaged.

To get good images, it is important that the body part being imaged is in the correct position. The radiographer will take the time to explain and properly position you.

The radiographer must wear a lead gown and lead collar if they need to remain in the room with you during the imaging process. This is because the radiographer works with radiation every day throughout their career and must be extra cautious to avoid unnecessary radiation exposure. The protection of the lead gown and collar ensures that the radiographer can perform their job safely.

When the X-ray image is being taken, you may hear a buzzing sound and a beep from the X-ray machine.



11. This is our ultrasound lab. Here, the examination is performed by a radiologist, while a healthcare secretary assists.

The lights are dimmed when the radiologist performs the examination so that it's easier to see the images on the screen.

The radiologist will move an ultrasound probe along with ultrasound gel over the area that needs to be examined. The gel may feel somewhat cold, and sometimes the radiologist needs to apply a bit of pressure with the probe against your body to obtain good images. You will receive a towel to wipe off the ultrasound gel before you go home.

In the ultrasound lab, both imaging examinations and cortisone injections can be administered in and around joints. If you receive a cortisone injection, you must wait 20 minutes after the examination before you can go home. The ultrasound machine makes no sound.