

Visual guide for MRI



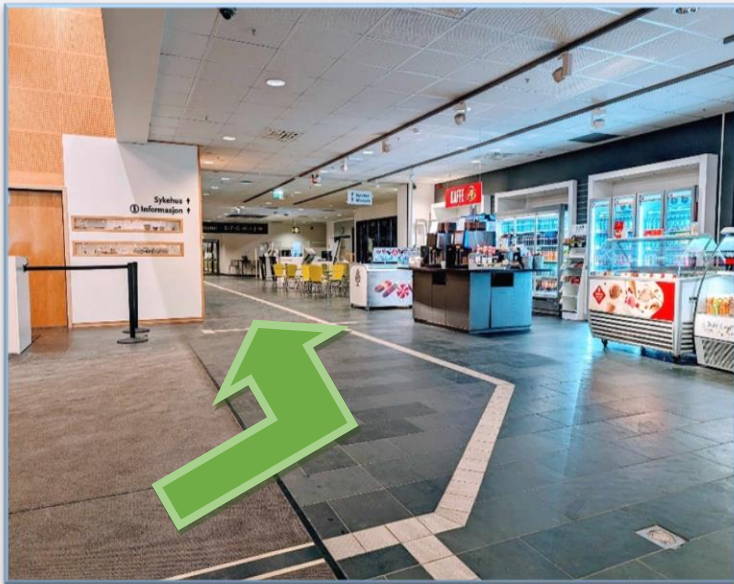
1. There is an automated glass door by the main entrance. Inside there is a revolving door, and you will also find the Security hatch manned by a security guard. Security guards are available round the clock.



2. Please register with the guard in the Security hatch to your left as you enter, if you are having X-rays after 9.00 pm.



3. Inside the revolving door you will find an automated facility where you can order a taxi round the clock.



4. The kiosk area and hotel reception will be renovated during the autumn of 2024. During this period, some noise from construction work may be experienced, and the layout will change.

To the right, you will find the restaurant that belongs to the hotel.

Go left to enter the hospital section and to the information desk.



5. The hospital's Information Service is manned weekdays from 7.00 am till 10.00 pm.

Saturdays: 10.00 am till 7.00 pm. Sundays: 11.00 am till 7.00 pm.

You can address the Security hatch outside of the Information desks opening hours.

Next to the Information desk you will find one of the Voluntary Services stations. The Voluntary Services will assist you if you need help to find your way in the hospital.

The Voluntary Services desk is manned: Monday to Thursday from 8.00 am till 6.30 pm. Fridays: 8.00 am till 3 pm.



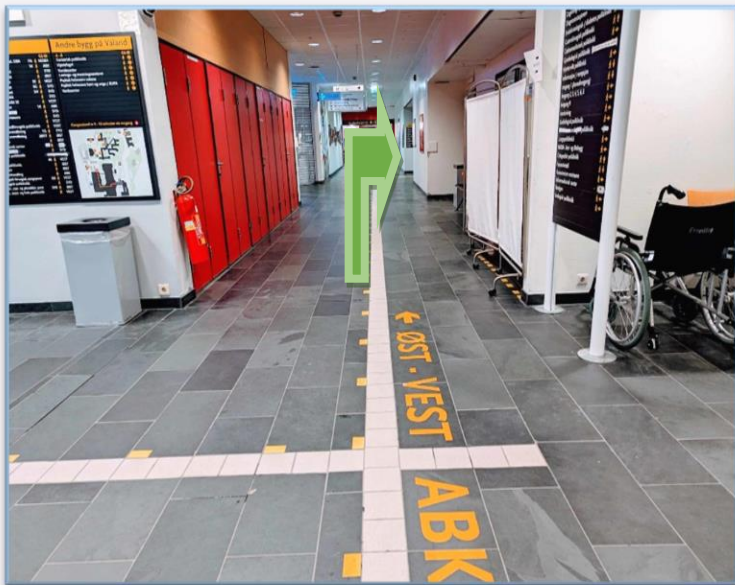
6. Please register upon arrival at the hospital. You can either register with the SMS you will receive on your smartphone, or on one of the automated Check-In facilities in the hospital.

You will receive an SMS with information about the payment after your appointment. You can either pay from home by using Vipps or automatically receive an invoice fee free invoice.

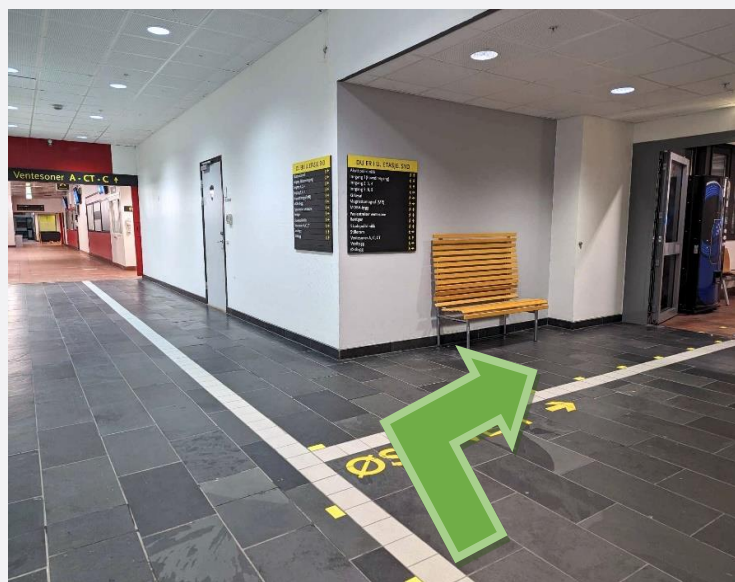
You can also register your arrival or pay after your appointment by using these automated facilities in the Information area.



7. Straight across from the Information desk there is a map of all the departments. There is also a map over the hospital building, and a smaller one depicting the adjacent buildings.



8. To get to MRI, you continue straight ahead. When you reach the pharmacy, you turn to towards right.



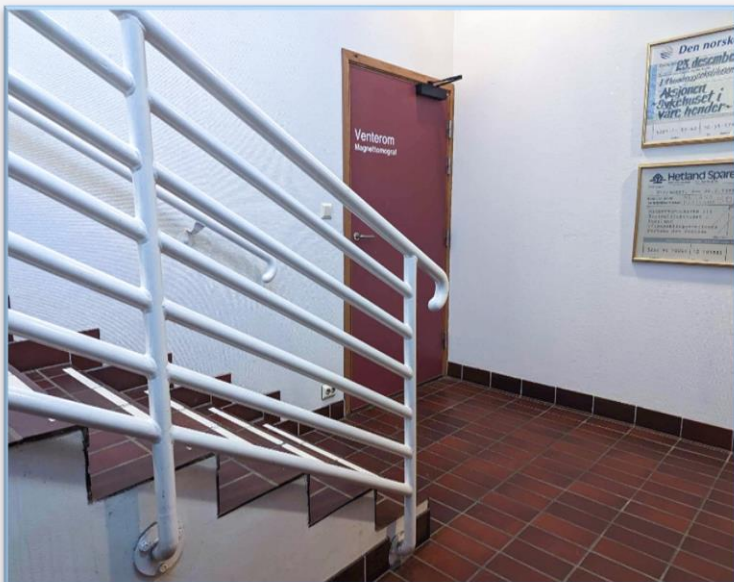
9. Please keep to your right and follow the yellow stripes on the floor down the hallway. You will pass the hairdresser salon, then you will see a glass wall on your left-hand side.



10. You will see the glass wall directly across from the hairdresser. The sign in the ceiling points to the door that leads down to MRI.



11. Please go down 4 stair landings.



12. To get to the Waiting Zone for MRI, please go through the door to your left at the bottom of the stairs.



13. If you require an elevator to get down to MRI, please go through these doors on your right-hand side. You will find these doors right before you get to the hairdresser.

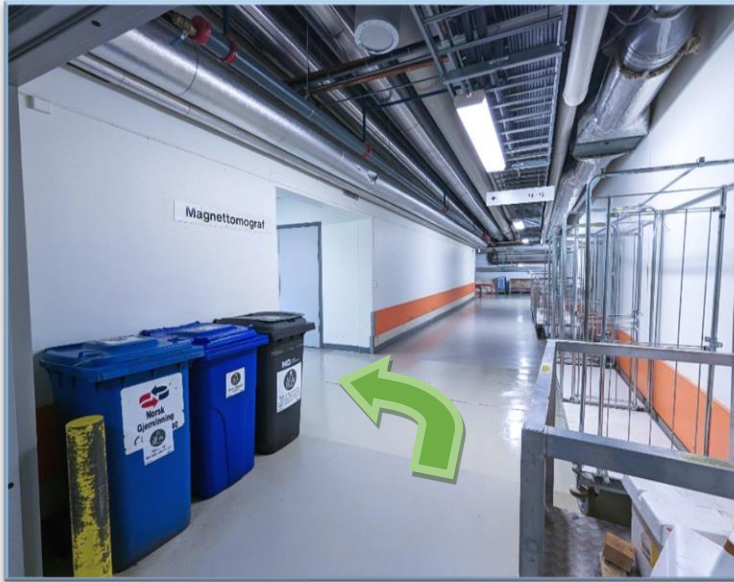
They open if you move your hand over the touch free door opener depicted in this photo.



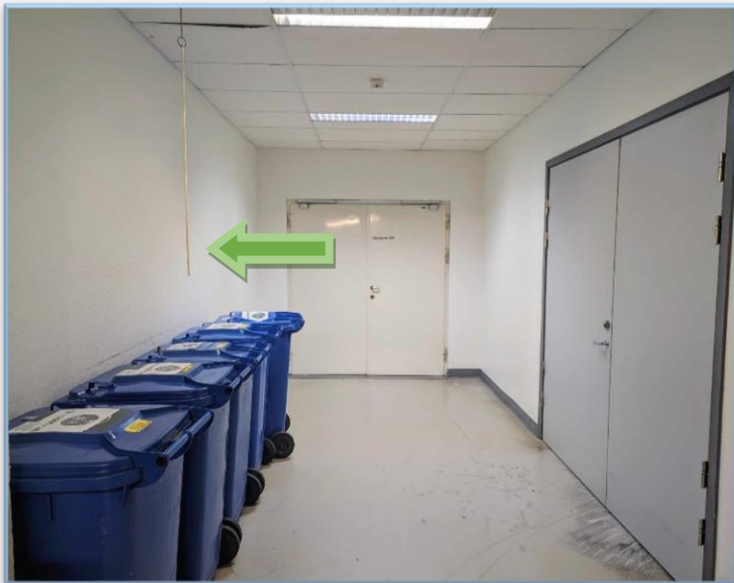
14. Please use elevator number 14 to the T-floor. Turn right as you exit the elevator. You will see the sign for the “Magnettomografi”, which is MRI.



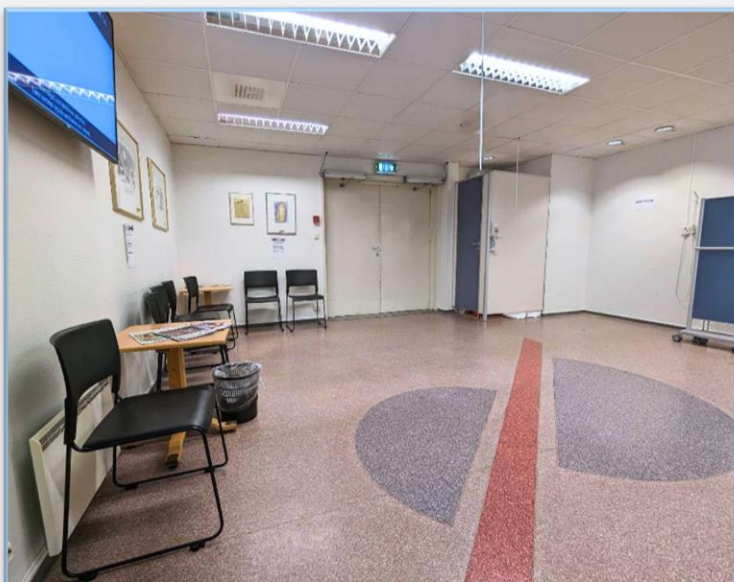
15. When you exit the elevator on the T-floor, keep to your right around the corner. You will see the sign for “Magnettomograf”, which is MRI.



16. You can see the sign on the T-floor here.



17. These white double doors lead to the Waiting zone for MRI. You can open the doors by pulling the strap to your left.



18. The Waiting zone has toilet facilities. A radiographer will call you when it is your turn.

To access the elevators, please exit through the double doors.

In the Waiting Zone there will be both In and Outpatients. There may be some buzz of voices. You may sometimes hear alarms.



19. In the room where the MRI machine is situated, there is a strong magnetic field. You will be asked to lock up magnetic items (for instance keys, wallet/debit card, jewelry, earrings, piercings, hairpins, watches, hearing aids, etc.) in this lockable cabinet.



20. This is one of our MRI machines. When the photos are taken you will lie down on the bench that moves into the tunnel. The tunnel is always open in both ends.

The MRI machine will emit loud banging sounds during the procedure. You will be offered hearing protection and earplugs to reduce the sound. You will also be offered the option of listening to music or radio if, you prefer this.

The periods with sound lasts from 1 to 5 minutes at a time. The procedure lasts from 15 to 60 minutes, depending on the examination. In order to get good images, it is important that you stay still while the images are captured.

Some examinations require a contrast medium. The radiographer will then insert an IV cannula (a thin plastic tube) into your arm or hand before the procedure.

You will be given an alarm that you can use to contact the radiographer if you need to during the procedure. The radiographer is also in touch with you via camera and microphone.



21. In order to capture the signals from the body that make up the MRI images, we use antennas we call “spools” or “coils”.

They are used over the area that will be photographed and may vary in appearance. This is a head coil that looks like a form of helmet.



22. This is another example of a coil that will be used over areas like for instance chest, stomach, pelvis and legs.

The coils vary in size and weight, and we will spend time making sure they are positioned comfortably over the body part that will be photographed.

You may feel that they heat up a little bit while we capture the images.